



# entertain

NewQuay corporate entertaining guide



<b>Full Name of Business</b>	Achelya Restaurant Café Bar		
<b>Address</b>	23 Aquitania Way, NewQuay, Docklands 3008		
<b>Telephone</b>	03 9602 2234	<b>Website</b>	<a href="http://www.achelya.com.au">www.achelya.com.au</a>
<b>Opening Times</b>	Open 7 days For breakfast, lunch and dinner 8am till late		
<b>Cuisine Type</b>	Traditional Turkish/Mediterranean		
<b>General Description</b>	Achelya Restaurant Cafe Bar has a relaxed, fun and cosy atmosphere making it ideal for all celebrations in Docklands. You can dance the night away to a variety of Turkish-English-Latin songs. Achelya serves a variety of traditional Turkish and Mediterranean cuisine, consisting of pasta and gourmet pizza.		
<b>Approx meal value (2 courses &amp; coffee)</b>	\$30-\$35 per person		
<b>Licensed/BYO</b>	Licensed		
<b>Capacity</b>	Inside: 100 - 110 Outside: 30 * Please note: All capacity figures are approximate – configurations can be adapted to suit group requirements		
<b>Wheelchair access</b>	Yes		
<b>Other information</b>	Achelya also has a comfortable lounge area where you can experience the Ancient smoking implement which come with a mild tobacco in a range of palatable flavours.		



RESTAURANT • BAR • CAFE

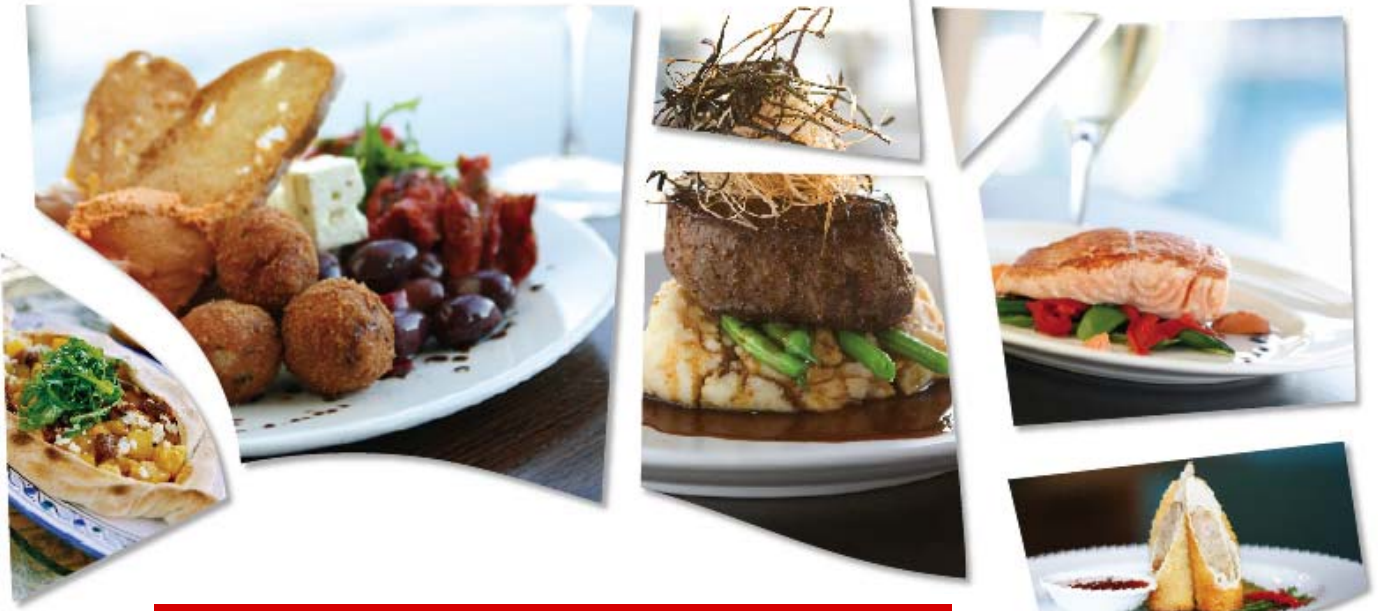
<b>Full Name of Business</b>	Berth Restaurant & Bar		
<b>Address</b>	45 NewQuay Promenade, NewQuay, Docklands 3008		
<b>Telephone</b>	03 9670 0199	<b>Website</b>	www.berth.com.au
<b>Opening Times</b>	Open 7 days Weekdays: 10.30am until late Weekends: 9.00am until late		
<b>Cuisine Type</b>	Modern Australian with an Italian influence		
<b>General Description</b>	Berth is situated on the water's edge at NewQuay and has spectacular views over the city skyline, Telstra Dome, the Bolte Bridge and the bay beyond. The cuisine is modern Australian with an Italian influence and all dishes are appetising, substantial and moderately priced.		
<b>Approx meal value (2 courses &amp; coffee)</b>	\$30-\$35 per person		
<b>Licensed/BYO</b>	Licensed		
<b>Capacity</b>	Upstairs: 80 (150 cocktail style) Downstairs: 80 Balcony: 35 Outside Downstairs: 25 * Please note: All capacity figures are approximate – configurations can be adapted to suit group requirements		
<b>Wheelchair access</b>	Yes, both downstairs and upstairs		
<b>Other information</b>	Berth has an upstairs function room that is ideal for corporate functions and other group occasions. The bar/lounge area has a plasma TV and is ideal for relaxed drinks and dinner after work. Everything on the menu can be made takeaway. Berth serves all day breakfast and focaccia's until 5pm, 7 days a week.		



# BHÖJ

## AN INDIAN FEAST

Full Name of Business	Bhoj Indian Restaurant		
Address	54 New Quay Promenade, NewQuay, Docklands 3008		
Telephone	03 9600 0884	Website	www.bhoj.com.au
Opening Times	Open 7 days Lunch: Noon – 3pm Dinner: 5.30pm – 11pm		
Cuisine Type	Indian		
General Description	<p>The aromatic intensity of Bhoj's culinary delicacies, its modern décor and excellent wine list make this an Indian restaurant without peer in Melbourne – and probably Australia. Winner of the 2004, 2005, 2006 and 2007 Age Good Food Guide Best Indian Restaurant.</p> <p>Contemporary regional Indian cuisine including dishes such as Butter Chicken, Kebabs and Kadai Lamb.</p>		
Approx meal value (2 courses & coffee)	\$32 per person		
Licensed/BYO	Licensed		
Capacity	Inside: 115 Outside: 80 (in the wind protected heated terrace) * Please note: All capacity figures are approximate – configurations can be adapted to suit group requirements		
Wheelchair access	Yes		
Other information			



# Bopha Devi Docklands

<b>Full Name of Business</b>	Bopha Devi Docklands		
<b>Address</b>	27 Rakaia Way, NewQuay, Docklands 3008		
<b>Telephone</b>	03 9600 1887	<b>Website</b>	<a href="http://www.bophadevi.com">www.bophadevi.com</a>
<b>Opening Times</b>	Open from midday to 10.00pm Tuesday to Sunday and from midday to 11pm Friday and Saturday. The bar is open until 1am.		
<b>Cuisine Type</b>	Cambodian		
<b>General Description</b>	A contemporary Cambodian restaurant and bar that oozes warmth and style. Distinct, exotic and healthy ingredients are offered on this unique menu.		
<b>Approx meal value (2 courses &amp; coffee)</b>	\$29 per person		
<b>Licensed/BYO</b>	Licensed		
<b>Capacity</b>	Inside: 75 Outside: Nil * Please note: All capacity figures are approximate – configurations can be adapted to suit group requirements		
<b>Wheelchair access</b>	Yes		
<b>Other information</b>			



# fish bar

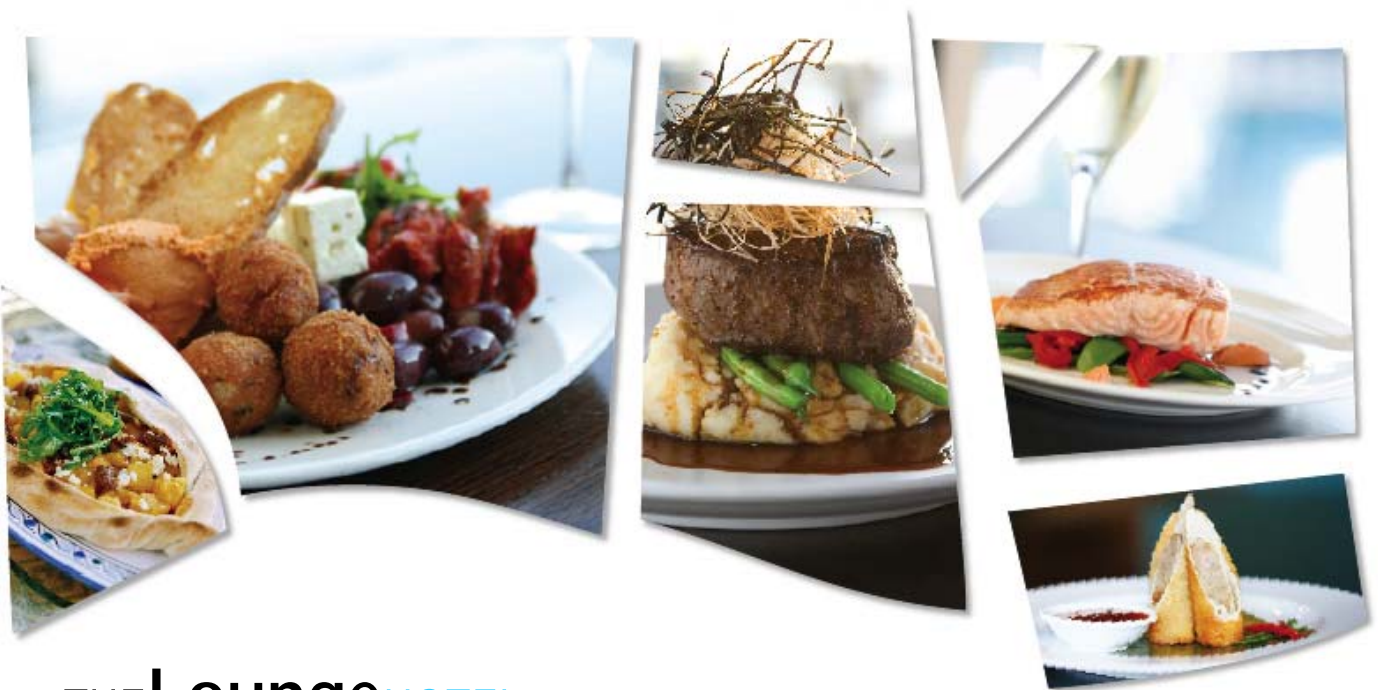
<b>Full Name of Business</b>	Fish Bar		
<b>Address</b>	25 NewQuay Promenade Docklands VIC 3008		
<b>Telephone</b>	03 9670 5410	<b>Website</b>	<a href="http://www.fishbar.com.au">www.fishbar.com.au</a>
<b>Opening Times</b>	Open 7 days Summer, 10am – 11pm Winter, 11am – 9pm		
<b>Cuisine Type</b>	Fish and chips		
<b>General Description</b>	Gourmet fish and chips offering healthy options with char grill and using cottonseed oil for frying. Fresh sushi available daily.  Alfresco seating with great views overlooking the marina.		
<b>Approx meal value</b>	\$8 per person		
<b>Licensed/BYO</b>	Licensed		
<b>Capacity</b>	Inside: 8 Outside: 50 * Please note: All capacity figures are approximate – configurations can be adapted to suit group requirements		
<b>Wheelchair access</b>	Yes		
<b>Other information</b>			



<b>Full Name of Business</b>	Liquid – Restaurant – Tapas – Bar		
<b>Address</b>	50 New Quay Promenade, NewQuay, Docklands 3008		
<b>Telephone</b>	03 9642 4242	<b>Website</b>	<a href="http://www.liquidbar.com.au">www.liquidbar.com.au</a>
<b>Opening Times</b>	Open from 8.00am 7 days a week, serving breakfast until late, lunch and dinner from 6.00pm		
<b>Cuisine Type</b>	Contemporary Mediterranean, offering diversity with true Spanish tapas.		
<b>General Description</b>	<p>Since opening at NewQuay in November 2002, LIQUID has become a hit with the locals and visitors alike. On the waterfront with an outdoor promenade deck (heated of course) it's the ideal location to take in the harbour and city views. The menu is contemporary Mediterranean, offering diversity with true Spanish tapas. Local produce, prime cut beef and fresh seafood, combine this package into the NewQuay place to eat. Whether you're enjoying the spectacular Harbour views, whilst enjoying our sumptuous breakfast, or grazing on a selection of tapas dishes, Liquid is the perfect destination for all dining occasions.</p>		
<b>Approx meal value (2 courses &amp; coffee)</b>	\$40		
<b>Licensed/BYO</b>	Licensed		
<b>Capacity</b>	Inside: 70 Outside: 40 <small>* Please note: All capacity figures are approximate – configurations can be adapted to suit group requirements</small>		
<b>Wheelchair access</b>	Yes		
<b>Other information</b>	Serves all day breakfast For more information or bookings – <a href="mailto:info@liquidbar.com.au">info@liquidbar.com.au</a>		



<b>Full Name of Business</b>	Livebait		
<b>Address</b>	55B New Quay Promenade, NewQuay, Docklands 3008		
<b>Telephone</b>	03 9642 1500	<b>Website</b>	www.livebait.com.au
<b>Opening Times</b>	Open 7 days Sun 12.00pm - 11.00pm Mon to Sat 12.00pm - 3.00pm and 5.30pm - 11.00pm		
<b>Cuisine Type</b>	Modern Seafood Brassiere		
<b>General Description</b>	<p>Livebait offers superb seafood with a strong emphasis on modern Asian flavours and quality regional produce.</p> <p>The restaurant is positioned right on the water in the heart of the Docklands with sensational 270 degree harbour and city views.</p> <p>Be tempted by the delicious selection of dishes including the spectacular saffron linguine with scallops, prawns, mussels, fish, calamari and crab.</p>		
<b>Approx meal value (2 courses &amp; coffee)</b>	\$60 per person		
<b>Licensed/BYO</b>	Licensed		
<b>Capacity</b>	Inside: 110 Outside Balcony: 50 * Please note: All capacity figures are approximate – configurations can be adapted to suit group requirements		
<b>Wheelchair access</b>	Yes		
<b>Other information</b>	Principal Chef and co-owner is Cath Claringbold.		



# THE LoungeHOTEL

<b>Full Name of Business</b>	The Lounge Hotel		
<b>Address</b>	28 New Quay Promenade, NewQuay, Docklands 3008		
<b>Telephone</b>	03 9600 0565	<b>Website</b>	<a href="http://www.theloungerroom.com.au">www.theloungerroom.com.au</a>
<b>Opening Times</b>	Restaurant: Monday to Friday - Noon – 3pm; 5.00pm – 10.30pm Saturday/Sunday – 8.00am – 10.00pm Bar: Sunday to Thursday – 10.00am – 1.00am Friday/Saturday – 10.00am – 3.00am		
<b>Cuisine Type</b>	Modern Australian		
<b>General Description</b>	<p>The Lounge Hotel is a venue that can do everything from outside functions to weddings. The Lounge offers a great menu at reasonable prices with an emphasis on share food.</p> <p>Live music is alternative, fresh top 40 playing Thursday, Friday, Saturday and Sunday.</p>		
<b>Approx meal value (2 courses &amp; coffee)</b>	\$30 per person		
<b>Licensed/BYO</b>	Licensed		
<b>Capacity</b>	Inside: 100 Outside: 60 * Please note: All capacity figures are approximate – configurations can be adapted to suit group requirements		
<b>Wheelchair access</b>	Yes		
<b>Other information</b>	Weekday Lunch specials		



MAN | MO

<b>Full Name of Business</b>	Man Mo Chinese/Malaysian Restaurant		
<b>Address</b>	42 New Quay Promenade, NewQuay, Docklands 3008		
<b>Telephone</b>	03 9642 1997	<b>Website</b>	www.manmo.com.au
<b>Opening Times</b>	Open 7 days Lunch: Noon – 3.00pm Dinner: 6.00pm – 11.00pm Sat/Sun: Diner 6.00pm – 11.30pm		
<b>Cuisine Type</b>	Chinese/Malaysian		
<b>General Description</b>	Modern Chinese/Malaysian cuisine with a focus on fresh, seasonal seafood and produce with weekend yum cha and an outstanding wine list, makes Man Mo a truly unique Asian restaurant.		
<b>Approx meal value (2 courses &amp; coffee)</b>	\$35 per person		
<b>Licensed/BYO</b>	Licensed		
<b>Capacity</b>	Inside: 120 Outside: 60 * Please note: All capacity figures are approximate – configurations can be adapted to suit group requirements		
<b>Wheelchair access</b>	Yes		
<b>Other information</b>	Enjoy the special attention you will receive when <a href="#">booking</a> your corporate lunch or dinner at Man Mo. Enjoy a relaxing drink or two in our lounge area before proceeding into the separate dining area. Man Mo can cater for all your wedding reception needs. They even cater for traditional Chinese weddings, where they can serve a special selection of the finest foods available.		



*Mecca Bah*

<b>Full Name of Business</b>	Mecca Bah		
<b>Address</b>	55A New Quay Promenade, NewQuay, Docklands 3008		
<b>Telephone</b>	03 9642 1300	<b>Website</b>	www.meccabah.com
<b>Opening Times</b>	Open 7 days 11am – 11pm		
<b>Cuisine Type</b>	Modern Middle Eastern		
<b>General Description</b>	<p>Enter Mecca Bah and be transported to the seductive style of Morocco and the Middle East as you enjoy a feast for the senses.</p> <p>Choose from the tantalizing selection of mezze dishes including minced lamb and pinenut Boureks or Lebanese sausages with spicy chickpeas or one of the freshly baked Turkish pizzas.</p> <p>Enjoy the informal, communal dining experience as you gaze across Victoria Harbour and the city skyline.</p>		
<b>Approx meal value (2 courses &amp; coffee)</b>	\$30 per person		
<b>Licensed/BYO</b>	Licensed		
<b>Capacity</b>	Inside: 100 Outside: 45 * Please note: All capacity figures are approximate – configurations can be adapted to suit group requirements		
<b>Wheelchair access</b>	Yes		
<b>Other information</b>			



# MEDICI

CAFÉ ▪ RESTAURANT ▪ BAR

Full Name of Business	Medici Bar & Ristorante		
Address	36 New Quay Promenade, NewQuay, Docklands 3008		
Telephone	03 9600 4160	Website	<a href="http://www.medici.net.au">www.medici.net.au</a>
Opening Times	Open 7 days 8am till late		
Cuisine Type	Contemporary Italian/Australian Cuisine		
General Description	Medici Bar & Ristorante is a funky and inviting restaurant catering to families, corporate functions and friendly get-together alike! Medici has an extensive range of meals for all times of the day and at reasonable prices. With waterfront views, a warm friendly atmosphere and great food you can't go wrong at Medici!		
Approx meal value (2 courses & coffee)	Less than \$50 per person		
Licensed/BYO	Licensed		
Capacity	Inside: 200 Outside: 100  * Please note: All capacity figures are approximate – configurations can be adapted to suit group requirements		
Wheelchair access	Yes		
Other information			



<b>Full Name of Business</b>	Renzo's Bar Café Italiano		
<b>Address</b>	46 New Quay Promenade, NewQuay, Docklands 3008		
<b>Telephone</b>	03 9640 0550	<b>Website</b>	<a href="http://www.renzosbar.com.au">www.renzosbar.com.au</a>
<b>Opening Times</b>	Open 7 days Monday to Friday 10am till late Saturday and Sunday 8.30am till late		
<b>Cuisine Type</b>	Italian		
<b>General Description</b>	Renzo's was the first restaurant to open in Docklands more than 4 years ago and it has continued to set the standard for great food and service. Renzo's offers authentic Italian flavours with a warm atmosphere and friendly service. It's a favourite with the locals and is fast being discovered by visitors. Renzo's also offers catering for corporate and special functions.		
<b>Approx meal value (2 courses &amp; coffee)</b>	\$38 per person		
<b>Licensed/BYO</b>	Licensed		
<b>Capacity</b>	Inside: 95 Outside: 95 * Please note: All capacity figures are approximate – configurations can be adapted to suit group requirements		
<b>Wheelchair access</b>	Yes		
<b>Other information</b>	Daily lunch special: \$25 p.p. – 2 courses and a glass of wine Takeaway available (10% discount)		



<b>Full Name of Business</b>	Saganaki Greek Cuisine & Grill		
<b>Address</b>	58 - 62New Quay Promenade, NewQuay, Docklands 3008		
<b>Telephone</b>	03 9606 0008	<b>Website</b>	www.saganaki.com.au
<b>Opening Times</b>	Open 7 days 12pm till late		
<b>Cuisine Type</b>	Modern Greek Cuisine		
<b>General Description</b>	Saganaki Greek Cuisine & Grill stands above with superb interior design and quality finishes. Floor to ceiling windows make the most of the venue's prime waterfront position where every table has a great view of Melbourne's bustling waterways. Whilst staying true to its Greek heritage, Saganaki features dishes infused with a modern Australian twist, using only the very best local produce.		
<b>Approx meal value (2 courses &amp; coffee)</b>	Packages are available from \$50 - \$95 per person		
<b>Licensed/BYO</b>	Licensed		
<b>Capacity</b>	Inside: up to 120 Outside: up to 100 * Please note: All capacity figures are approximate – configurations can be adapted to suit group requirements		
<b>Wheelchair access</b>	Yes		
<b>Other information</b>	Catering for: Group Bookings Corporate Events Weddings Business Lunches Private Functions Cocktail, 2 or 3 Course, Buffet, Banquet		



<b>Full Name of Business</b>	Steakhouse		
<b>Address</b>	66 New Quay Promenade, NewQuay, Docklands 3008		
<b>Telephone</b>	03 9640 0808	<b>Website</b>	www.steakhouse.net.au
<b>Opening Times</b>	Bar is open from 9.30 am until late 7 days Kitchen is open from 12 pm until late 7 days		
<b>Cuisine Type</b>	Steaks		
<b>General Description</b>	<p>As the name suggests – Steakhouse is all about the steak.</p> <p>Featuring prime quality Certified Australian Beef, including Angus and Wagyu steaks. Select from over 13 different steaks – cooked over the flame right before your eyes. You can watch the action on the grill from your seat on the wall mounted plasma screens. For those wanting lighter options, Steakhouse also has a large seafood and vegetarian menu.</p>		
<b>Approx meal value (2 courses &amp; coffee)</b>	<p>Entrée - \$16 Main - \$28 Dessert - \$15</p> <p>Steaks - \$28 to \$55</p>		
<b>Licensed/BYO</b>	Licensed		
<b>Capacity</b>	<p>Inside: 110 Outside: 40</p> <p>* Please note: All capacity figures are approximate – configurations can be adapted to suit group requirements</p>		
<b>Wheelchair access</b>	Yes		
<b>Other information</b>			



# VIC **harbour** kitchen and bar

<b>Full Name of Business</b>	Vic Harbour Kitchen & Bar		
<b>Address</b>	58- 70 New Quay Promenade, New Quay Docklands, 3008		
<b>Telephone</b>	03 9670 5550	<b>Website</b>	<a href="http://www.vicharbour.net">www.vicharbour.net</a>
<b>Opening Times</b>	Open 7 days a week: Mon – Fri: 10.00am – late Sat/Sun: 9.00am - late		
<b>Cuisine Type</b>	Australian Cuisine - Old Favourites, Pastas, Seafood and Australian Native Game Meats		
<b>General Description</b>	A great spot to sit and take in the scenery, boasting uninterrupted views over Victoria Harbour. The restaurant has a warm, cosy atmosphere, with the decor emphasising steel, timber, polished concrete and exposed concrete beams. The menu features many of your old favourite bistro dishes as well as a mouth-watering selection of grills - including a range of Native Australian Game Meats.		
<b>Approx meal value (2 courses &amp; coffee)</b>	\$35 per person		
<b>Licensed/BYO</b>	Licensed		
<b>Capacity</b>	Inside: 160 - 200 Outside: 80 Cocktail Functions: 500 (inside and outside)  * Please note: All capacity figures are approximate – configurations can be adapted to suit group requirements		
<b>Wheelchair access</b>	Yes		
<b>Other information</b>	Mid week specials regularly available		



*Waterside*  
Oriental Bistro

<b>Full Name of Business</b>	Waterside Oriental Bistro	
<b>Address</b>	8 – 10 New Quay Promenade, New Quay, Docklands, 3008	
<b>Telephone</b>	03 9670 4168	<b>Website</b>
<b>Opening Times</b>	Sunday to Thursday:	12 noon to 3.00pm 5.30pm to 10.30pm
	Friday:	12 noon to 3.00pm 5.30pm to 11.00pm
	Saturday:	5.30pm to 11.00pm
<b>Cuisine Type</b>	Oriental Chinese	
<b>General Description</b>	From casual to formal dining, Waterside Oriental Bistro serves authentic Chinese cuisine including Peking Duck, Cantonese Roast Duck, Crispy Skin Roast Pork and a variety of rice and noodle dishes.	
<b>Approx meal value (2 courses &amp; coffee)</b>	Chinese banquet from \$18.80 per person	
<b>Licensed/BYO</b>	Licensed	
<b>Capacity</b>	Inside: 80 Outside: 20  * Please note: All capacity figures are approximate – configurations can be adapted to suit group requirements	
<b>Wheelchair access</b>	Yes	
<b>Other information</b>		